



550 Meyer Road  
P.O. Box 129  
West Seneca, NY 14224  
KPC Phone: (716) 675-2767  
KPC Line 10 Phone: (855) 939-7473  
(814) 723-1201  
E-mail: kiantoneinfo@urc.com

## KIANTONE & UNITED REFINING

Kiantone Pipeline is a coated steel transmission pipeline that extends from Buffalo, New York to Warren, Pennsylvania. Its sole purpose is to deliver crude oil to United Refining Company's refinery, where it is transformed into usable fuels such as gasoline, diesel fuel, propane, butane, asphalt, and a variety of other petroleum products. The crude oil originates in western Canada providing for a line of products generated entirely in North America. Kiantone Pipeline is owned by United Refining Company and was built in 1971.

Kiantone Pipeline (KPL) is owned and operated through the parent company United Refining Company (URC) located in Warren, PA.

## RIGHT-OF-WAYS & FACILITIES

Kiantone Pipeline traverses approximately 102 miles of right-of-way (ROW) from the Canadian border at the West Niagara River crossing into Buffalo, NY and then proceeds to its final destination in Warren, PA. The ROW includes a variety of properties from highways and parking lots to fields and wilderness. The law requires these ROWs to be kept clear of trees, buildings or other structures except for pipeline markers. This allows for regular surveillance to ensure no unauthorized activities or encroachment occurs that could damage the pipeline. Any land use in these areas is minimized to ensure quick and unobstructed access in case of an emergency.

In addition to monitoring land use, both operators regularly provide notice to landowners, excavators, and the affected public about their obligation to call 811 prior to all digs. Emergency responders should also remember that any digging during a response requires an emergency one-call notification to 811. Public safety and environmental protection are top priority in an emergency response.

In addition to its pipelines, Kiantone and URC also maintain tank facilities and pumping operations. These locations are regularly manned and maintain a strict level of security. Response plans are on file at each Control Center that detail the pipeline assets, emergency procedures, structure (e.g. unified command), and other response information. For more information please contact the corresponding pipeline manager above.

## INTEGRITY MANAGEMENT

To ensure our pipelines perform their jobs quietly and safely, Kiantone and URC also maintain integrity management programs. These programs are used to evaluate the pipeline conditions and the surrounding environments, including zones deemed as high consequence areas (HCAs) by the DOT. These HCAs are given special attention to ensure pipeline integrity is managed at a higher level as impacts would be greater.

The integrity management program includes several monitoring systems to verify the condition of the pipelines and to ensure they are controlled at a safe operating level. In addition, a variety of assessment technologies are used to check both the inside and outside of the pipelines and their corrosion prevention systems. All data is then regularly evaluated through risk modeling to provide a complete look at where risk is higher so that preventive and mitigative measures can be implemented as needed. More information on integrity management can be obtained by calling the pipeline manager above.

## SIGNS OF A RELEASE

- Oil on the ground
- Rainbow sheen on water
- Dirt blowing into the air
- Mud or water bubbling up
- Dead vegetation in an otherwise green area
- A hissing or roaring sound
- Oily odor

## EMERGENCY CONTACT: 1-814-723-1201

### PRODUCTS/DOT GUIDEBOOK ID#/GUIDE#:

Crude Oil	(KPC)	1267	128
Diesel Fuel	(URC)	1993	128
Light Cycle Oil	(URC)	1993	128
FCC Charge	(URC)	1270	128

### PENNSYLVANIA COUNTIES OF OPERATION:

Warren

*Changes may occur. Contact the operator to discuss their pipeline systems and areas of operation.*

## HAZARDS FROM A RELEASE

- Fire or explosion
- Harmful vapors
- Environmental damage

## PIPELINE MARKERS

Markers display the:

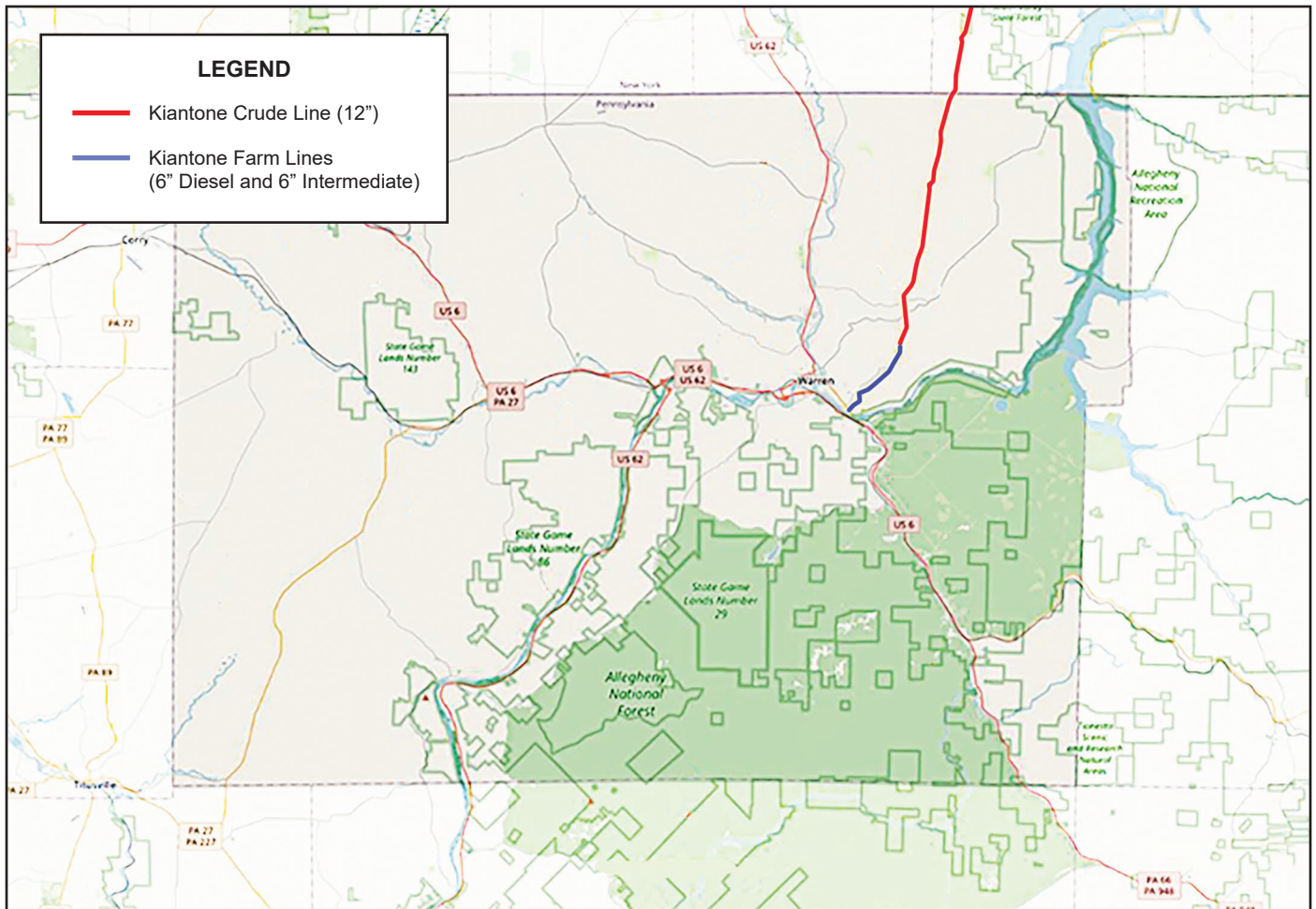
- Material transported
- Name of the pipeline operator
- Operator's emergency number
- Approximate area of pipeline operation

Markers do not:

- Show exact location
- Indicate depth
- Indicate pipeline pressure



**Know what's below.  
Call before you dig.**



Base map courtesy of openstreetmap.org